

# Exhibition ponders roadside America

HUDSON--The Great South Bay Gallery at Stageworks/Hudson Presents In America, paintings by Jeffrey L. Neumann from July 7 to August 31.

Jeffrey Neumann's contemporary realist paintings in oil and watercolors reflect a vision of this country that is rapidly disappearing.

The vernacular American architecture that are the settings for Neumann's landscapes come from diverse locales: from the West to the Deep South to New England.

The images will resonate most strongly with those who have spent a lot of time on America's two-lane highways.

Born in Cedar Rapids, Iowa, Neumann spent much of his childhood in Albuquerque and Roswell, N.M. Although the Neumann family later settled in New England, Neumann's imagination was fired by his observation of the southwestern landscape as a child in the backseat of the family station wagon.

The artist moved to Hillsdale several years ago and lives there with his wife Allison Herrington.

There will be a reception for the artists Friday, July 7, from 5:30 to 7:30 p.m.

Mary Udell and Pat Goldstein are co-curators for Great South Bay Gallery at Stageworks/Hudson, which is located at 41 Cross St. Telephone: (518) 828-7843.

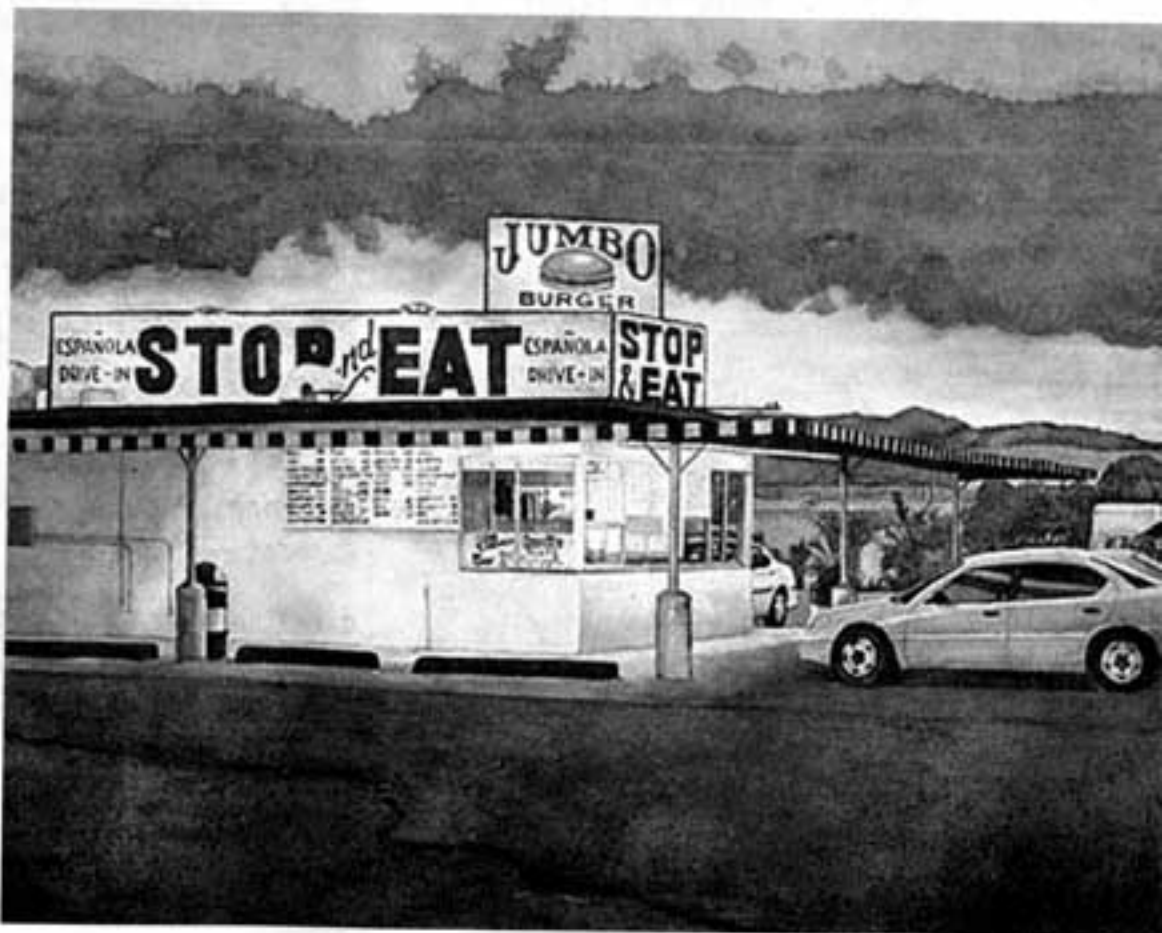


Image contributed

"Stop and Eat" (watercolor, 34" x 47") is among the works depicting life along America's two-lane blacktops that will go on display this week at the Great South Bay Gallery in Hudson.

Concert benefits S